



GLOBE VALVE DN150 JIS 10K

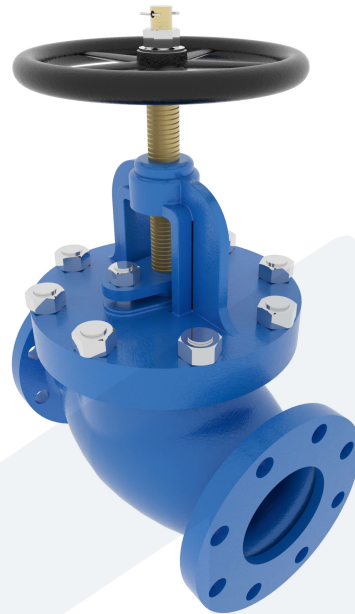
150-00001932
F-7471

Straight type - SDNR

DESCRIPTION: Straight type, Cast Steel body, metal seated globe valve with rising stem. Bolted bonnet. Flat face flanges.

STANDARD & DESIGN:

| | |
|----------------------|----------------------|
| End Standard | JIS B2220 |
| Inspection Standard | JIS F7400 |
| Remark | Connection: JIS 10K |
| Throughput Direction | Straight |
| Variant | SDNR |
| End Type | Flanged |
| Design Code | JIS F7319 |
| Standard | JIS |
| Material Seat | Stainless Steel, 420 |
| Material Disc | Stainless Steel, 420 |
| Material Body | Cast Steel |
| Sub Category | GLOBE |
| Item Number | 150-00001932 |
| Category | Valve |



| No | Part | Material | Code | Application |
|----|--------------|-----------------|-----------|-------------------------------|
| 1 | Body | Cast Steel | ZG230-450 | Boiler feedwater |
| 2 | Bonnet | Cast Steel | ZG230-450 | Cargo oil |
| 3 | Gland | Stainless Steel | 2Cr13 | Condensate |
| 4 | Disc | Stainless Steel | 2Cr13 | Flammable hydraulic oil |
| 5 | Stem | Stainless Steel | 2Cr13 | Fuel oil |
| 6 | Gasket | Graphite | | Lubricating oil |
| 7 | Packing | Graphite | | Non-flammable hydraulic fluid |
| 8 | Sealing ring | Stainless Steel | 2Cr13 | Water |
| 9 | Handwheel | Cast Iron | HT200 | |

| DN | Pressure Rating Id | nxdd | Hcd | Ø D | L | Kg | H | Ø M |
|-----|--------------------|------|-----|-----|-----|------|-----|-----|
| 150 | 10 | 8x23 | 240 | 280 | 490 | 96.4 | 470 | 315 |

