



GLOBE VALVE 1 1/4" PN16

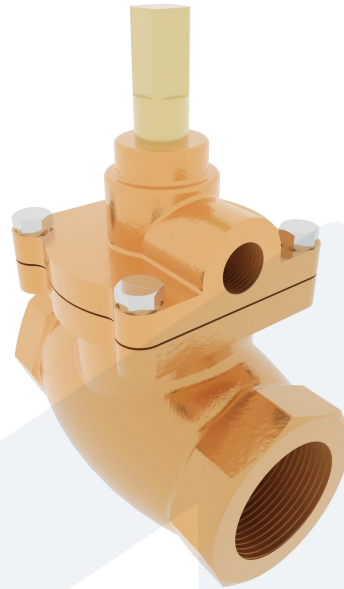
Straight type - SDSL with drain

M80251
314122

DESCRIPTION: Straight type, Bronze RG5 body, soft seated globe valve with self-draining outlet side. Bolted bonnet. Female threaded ends.

STANDARD & DESIGN:

End Standard	ISO 228-1
Max temperature	+30°C
Throughput Direction	Straight
Variant	SDSL with drain
End Type	Threaded
Standard	DIN
Material Seat	Leather
Material Body	Bronze
Sub Category	GLOBE
Item Number	M80251
Category	Valve



No	Part	Material	Code	Application
1	Body	Bronze	CC 491K	Sea water
2	Bonnet	Bronze	CC 491K	Water
3	Stem	Brass	CW 710R	
4	Gasket	Leather		

DN	Pressure Rating Id	L	Kg	H	H1	G	S	G1
32	16	105	1.7	150	57	1 1/4"	10	1/4"

