



STORM VALVE DN65 PN4/PN10

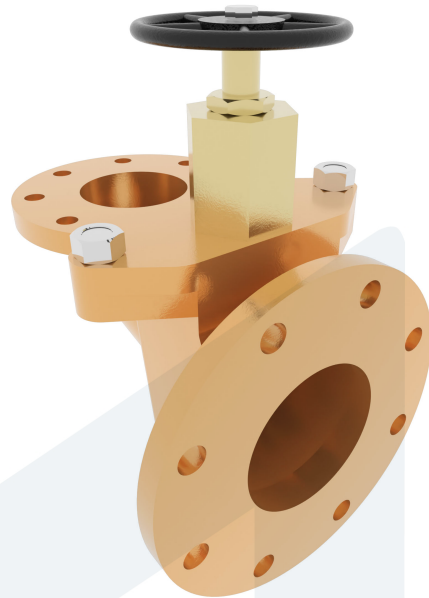
280-0000009
159121

Angled type

DESCRIPTION: Angled type closable check valve. Bronze RG5 body. Soft sealing disc. Flat face flanges. Different inlet/outlet diameter.

STANDARD & DESIGN:

End Standard	EN 1092-3
Face To Face Standard	DIN HNA Sr 6
Remark	Connection: PN10
Min temperature	-10°C
Max temperature	+60°C
Throughput Direction	Angled
End Type	Flanged
Design Code	DIN HNA Sr 6 Form B
Standard	DIN
Material Seat	NBR
Material Disc	Bronze
Material Body	Bronze
Sub Category	STORM
Item Number	280-0000009
Category	Valve



No	Part	Material	Code	Application
1	Body	Bronze	CC 491K	Sea water
2	Bonnet	Bronze	CC 491K	Water
3	Disc	Bronze	CC 491K	
4	Disc sealing	NBR		
5	Bonnet gasket	NBR		
6	Stem	Brass	CW 614N	
7	Stem nut	Brass	CW 614N	
8	Plug	Stainless Steel	1.4301	
9	Handwheel	Cast Iron	GG25	

DN	Pressure Rating Id	Ø D	L	Kg	H	H1	n1xØd1	Hcd1	Ø D1	n2xØd2	Ø D2	Ø M	Hcd2
65	4	85	200	16	270	100	4x18	145	185	8x18	220	140	180

