



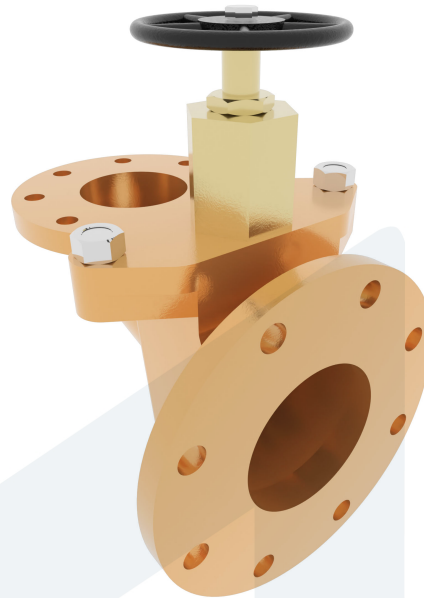
STORM VALVE DN80 PN4/PN10 280-0000010

Angled type 159121

DESCRIPTION: Angled type closable check valve. Bronze RG5 body. Soft sealing disc. Flat face flanges. Different inlet/outlet diameter.

STANDARD & DESIGN:

| | |
|-----------------------|---------------------|
| End Standard | EN 1092-3 |
| Face To Face Standard | DIN HNA Sr 6 |
| Remark | Connection: PN10 |
| Min temperature | -10°C |
| Max temperature | +60°C |
| Throughput Direction | Angled |
| End Type | Flanged |
| Design Code | DIN HNA Sr 6 Form B |
| Standard | DIN |
| Material Seat | NBR |
| Material Disc | Bronze |
| Material Body | Bronze |
| Sub Category | STORM |
| Item Number | 280-0000010 |
| Category | Valve |



| No | Part | Material | Code | Application |
|----|---------------|-----------------|---------|-------------|
| 1 | Body | Bronze | CC 491K | Sea water |
| 2 | Bonnet | Bronze | CC 491K | Water |
| 3 | Disc | Bronze | CC 491K | |
| 4 | Disc sealing | NBR | | |
| 5 | Bonnet gasket | NBR | | |
| 6 | Stem | Brass | CW 614N | |
| 7 | Stem nut | Brass | CW 614N | |
| 8 | Plug | Stainless Steel | 1.4301 | |
| 9 | Handwheel | Cast Iron | GG25 | |

| DN | Pressure Rating Id | Ø D | L | Kg | H | H1 | n1xØd1 | Hcd1 | Ø D1 | n2xØd2 | Ø D2 | Ø M | Hcd2 |
|----|--------------------|-----|-----|----|-----|-----|--------|------|------|--------|------|-----|------|
| 80 | 4 | 100 | 215 | 22 | 290 | 108 | 8x18 | 160 | 200 | 8x18 | 250 | 140 | 210 |

